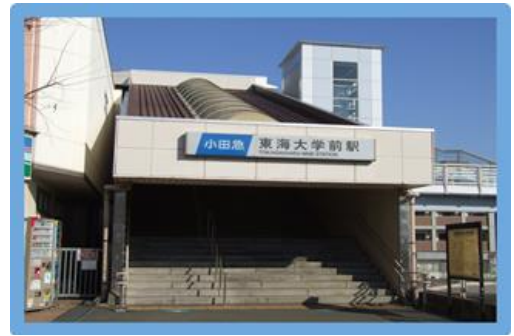


HOW TO GET TO HADANO SOYA HIGH SCHOOL FROM TOKAIDAIGAKU-MAE STATION

I will guide you to Hadano Soya High School!

◆ Take Odakyu Line for Odawara on Platform 1.



◆ Get off at Hadano Station. (It takes 4 minutes.)

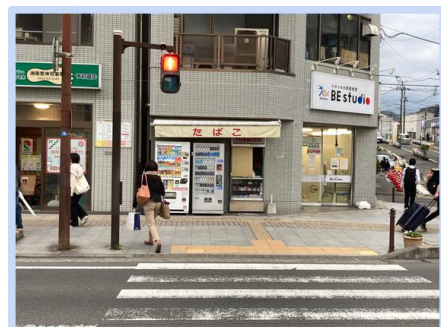
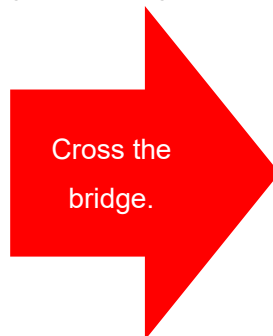
◆ After you get through the ticket gate at Hadano Station, go RIGHT.



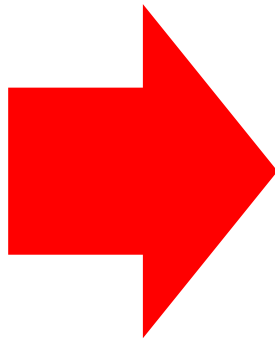
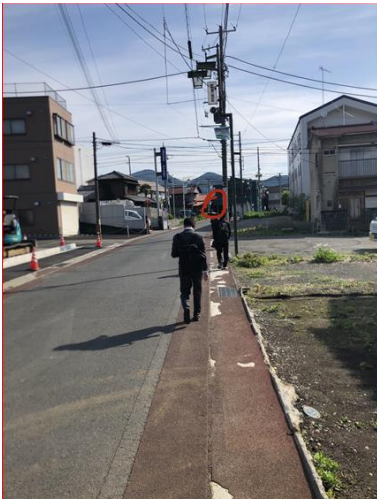
◆ This is a difficult part.

- As you walk on, you are getting out of the station building.
- On your left, there is a small elevator. (It's a small grey elevator. It's hard to find! If you see an up-escalator, you went too far. Go back.)
- Take the elevator to the ground level.
- As you get out of it, go left.

◆ As you walk on, you get to a zebra crossing and a bridge over a small river. Cross it, and walk across the street.



◆ Walk on. Walk up the street. At the end of the street, turn left.



◆ Walk until the first traffic light. (It's a busy street. A lot of cars are running.) At the traffic light, turn right.

Detour

◆ Along the street, there is a big shopping mall on your left. You can do some shopping there.



◆ You will see a gas station on your left.

◆ You will pass a bus stop.

*The bus stop is called "SUEHIRO Elementary School (SUEHIRO Shogakko Mae)".



Hadano Soya High School is close!

◆At this sign, go right and walk up a narrow street. (Don't miss this sign!)



◆Turn left, and proceed.



Welcome to Hadano
Soya High School!

協力 2023年 北野 論理・表現Iクラス

教科書で学習した「道案内」の表現を使いながら、生徒は、秦野曾屋高校を初めて訪れる人を対象にした英語の道案内を作成しました。各グループでそれぞれエリアに分かれ、1つのクラスで東海大学前駅から曾屋高校までのルート案内を仕上げました。スポットごと、ランドマークになる箇所の写真を用意したり、スライドにこだわったり、もちろん英語の表現についても、「伝わる英語表現」を書くことにチャレンジしました。学校紹介動画を英語で作成している曾屋高校の1年生として、これからも英語を通して視野を広げられるような人材育成を目指していきます。

